

# AWI 58 H

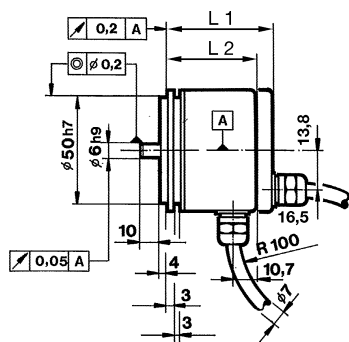
- Incremental shaft encoder
- Protection: IP 65
- max. 10000 Pulses per revolution
- Frequency:
  - 200 kHz / Output Push Pull
  - 300 kHz / Output RS 422



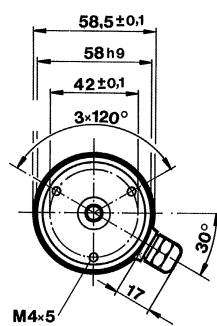
Pulse per revolution:	AWI 58 H	2500 / 3000 / 3400 / 3480 / 3600 / 3750 / 3925 / 3958 / 3968 / 4000 / 4096 / 4445 / 4800 / 5000 / 5400 / 6000 / 6875 / 7200 / 7680 / 7854 / 8000 / 8192 / 9000 / 10000
-----------------------	----------	--

## Mechanical Dimensions:

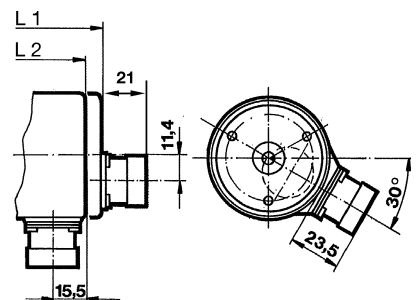
Synchro flange, 58 mm  
Cable, axial/radial



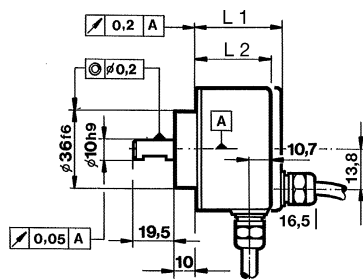
L 1 max: = 57,5 mm  
L 2 max: = 56 mm



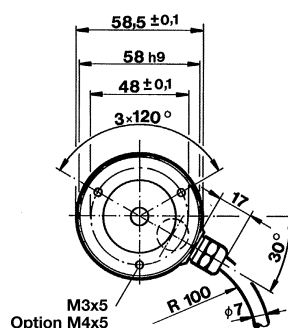
12 Pin plug, axial/radial



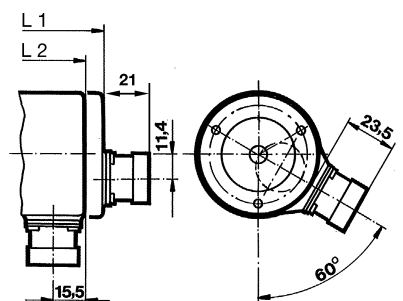
Clamp flange, 58 mm  
Cable, axial/radial



L 1 max: = 57,5 mm  
L 2 max: = 56 mm



12 Pin plug, axial/radial



## Electrical Spezifications:

Declaration of conformity: DIN VDE 0160

Power supply:	RS 422 + Alarm (R):	5 VDC ± 10% oder 10....30 VDC <sub>1</sub> )
	Push Pull (K, I):	10....30 VDC <sub>1</sub> )
Current consumption :	40 mA (5 VDC), 60 mA (10 VDC), 30 mA (24 VDC)	
Output circuits:	RS 422 (R):	A, B, N, A-, B-, N-, Alarm——
	Push Pull (K):	A, B, N, Alarm——
	Push Pullt inverse (I):	A, B, N, A-, B-, N-, Alarm——

## Mechanical Specifications:

Shaft:	6 mm / 10 mm	
Shaft load cacapity:	Ø 10 mm	radial 60 N / axial 40 N
	Ø 6 mm	radial 40 N / axial 20 N
Operating speed:	10000 min. <sup>-1</sup>	
Operating torquet:	- 0,5 Ncm (IP 65)	
Inertia moment of rotor:	Synchro flange	ca. 14 gcm <sup>2</sup>
	Clamp flange	ca. 20 gcm <sup>2</sup>
Protective system:(EN 60529):	IP 65	
Operating temperature:	AWI 58 H: -10....+70° C	
Storage temperature:	AWI 58 H: -25....+85° C	
Vibration resistance (IEC 68-2-6):	100 m/s <sup>2</sup> (10....2000 Hz)	
Thermal shock resistance(IEC 68-2-27):	1000 m/s <sup>2</sup> (6 ms)	
Connection:	1,5 m Cable or connector	
Enclosure:	Aluminium Ø 58 mm	
Flange:	S = Synchro flange, K = Clamp flange	
Wight:	ca. 360 g	

## Connections Cable TPE:

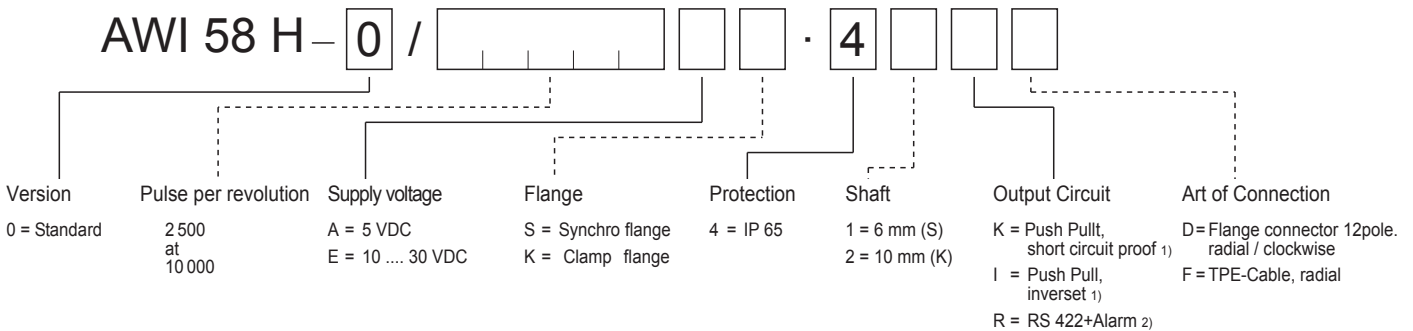
Cable TPE (F) Color	Output RS 422 (R)	Push,Pull (K)	Push,Pull inverset (I)
brown/green	5/10....30 VDC=	10....30 VDC=	10....30 VDC=
blue	Sense Vcc		Sense Vcc
brown	Channell	Channel A	Channel A
green	Channel A		Channel A-
grey	Channel B	Channel B	Channel B
pink	Channel B-		Channel B-
red	Channel N	Channel N	Channel N
black	Channel N-		Channell N-
white/green	GND	GND	GND
violet	Alarm——	Alarm——	Alarm——

## Flange connector 12pole (clockwise)

Pin	RS 422 + Alarm (R)	Push,Pull (K)	Push,Pullt inverse (I)
1	Channel B-	N.C.	Channel B-
2	Sense Vcc	N.C.	Sense Vcc
3	Channel N	Channel N	Channel N
4	Channel N-	N.C.	Channel N-
5	Channel A	Channel A	Channel A
6	Channel A -	N.C.	Channel A-
7	Alarm——	Alarm——	Alarm——
8	Channel B	Channel B	Channel B
9	N.C.*	N.C.*	N.C.*
10	GND	GND	GND
11	N.C.	N.C.	N.C.
12	5/10....30 VDC=	10....30 VDC=	10....30 VDC=

\* shield by cable with connector

## Order No:



1) Supply voltage 10 .... 30 VDC  
2) Supply voltage 5 VDC

(matching plug with ready made cable upon request)

See page 55/56 for mechanical accessories