

Series CSMXE absolute 4...20mA heavy duty shaft encoder up to 12mm



M	E	X	X	-	X	X	X	X	-	0	X	X	X
		Output				Resolution							
		06 = 2 wire				090 = 90 degrees							
		34 = 3 wire				180 = 180 degrees							
		Shaft Size				360 = 360 degrees							
		K5 = 12 x 20 mm				degrees per ramp (turn)							
						Exit							
						A = Axial							
						R = Radial							
						Connection							
						3 = 10 m cable							
						5 = 20 m cable							
Protection													
E = IP66/67 Stainless Steel													



Technical Data

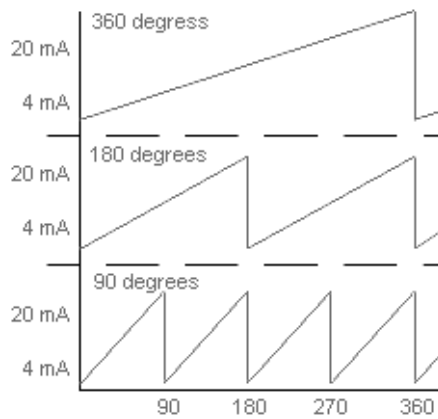
Operating temp:	- 20 ...+ 60 degrees C
	- 4 ...+ 140 degrees F
Optional:	-40 degrees
Current consumption:	80 mA (max.)
Power supply:	24V
Weight:	2.5Kg
Housing:	S. Steel
Shaft:	Stainless Steel
Bearings:	2 x 6001 RSH
Torque:	0.4 oz/in (3 N-cm)
Humidity:	Up to 98% permissible
Speed:	3000 RPM max.
Shaft load:	Radial / Axial 10 N

Connection Options

2 wire version	
+ Loop	Red
- Loop	Black
3 wire version	
PS GND	Black
PS +24 Volts	Red
Output 4...20 mA	White

Output

Count will increment in CW direction.



*4...20mA span based on 250 ohm load

Certifications

Does not require a barrier for use in hazardous areas, it is **Flameproof**, making the barrier redundant.

IP 66/X7

Ex d IIC (mining safety markings optional)

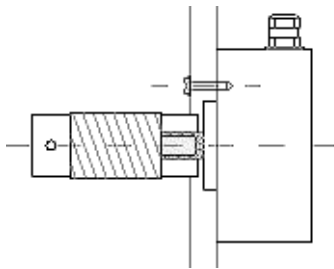
ATEX

IECEX

CSA

Mounting Instructions

To mount encoder on machine: Option 1 is to mount with three screws, option 2 is to use synchroflange mounting brackets. Hook up the encoder with the connections as described. Make sure power supply meets specifications. Attach encoder to mounting bracket as shown. Attach shaft using a flexible coupling.



Dimensions

