

## Series 08 stainless steel 4...20mA tachometer up to 1/2"



0 8 X X - 0 5 X X - X X X X

<u>Shaft Size</u>		<u>Speed (RPM)</u>
10 = 10 mm		4mA = 0 RPM
12 = 12 mm		20mA = Max RPM
		Rated RPM
		Min 300, Max 3000
<u>Connection</u>		<u>Housing Material</u>
1 = 2 m (6 ft) cable		S = Stainless Steel
F = 4 pin plug		



### Technical Data

Operating temp: - 20 ...+ 60 degrees C  
 - 4 ...+ 140 degrees F

Weight: 26 oz (0.75 kg)

Protection: IP 67M

Housing: Stainless Steel

Shaft: Stainless Steel

Bearings: 3 x 6803 ZZ C2

Torque: 0.8 oz/in (6 N-cm)

Shaft load: Supports its own weight

Humidity: Up to 98% permissible

Speed: 3000 RPM max.

Precision:

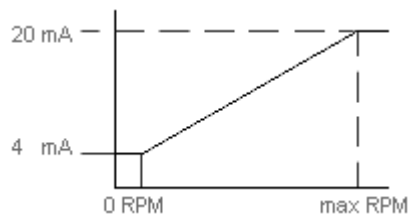
- 0 rpm = +/- 0.05mA
- 1 rpm to max rpm = +/- 0.2 mA

### Connection Options

**Cable 2 meters**

- + Loop Red
- Loop Black

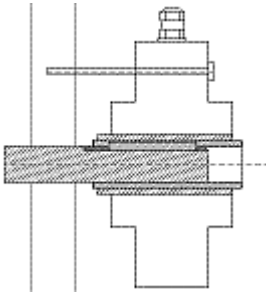
### Output



\*4...20mA span based on 250 ohm load

## Mounting Instructions

Clamp encoder to shaft and use torque arm to prevent rotation. Hook up the encoder with the connection as described. Make sure power supply meets specifications



## Dimensions

