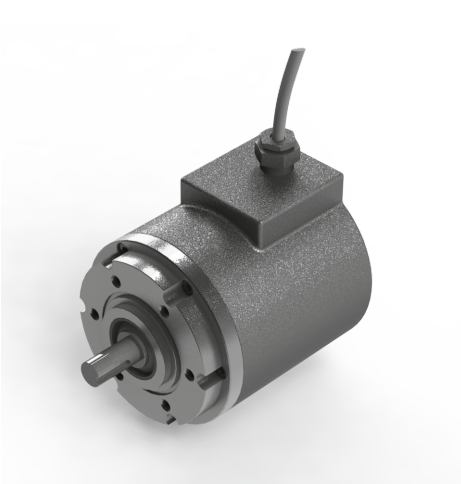


## Series 3000 heavy duty 4...20mA tachometer up to 12mm



3 X K 1 - 0 5 X X - X X X X

Protection  
C = IP66 Al  
D = IP66 S. St.

Connection  
1 = 2m cable  
2 = 5m cable

Exit

A = Axial  
R = Radial

Speed (RPM)

4mA = 0 RPM  
20mA = Max RPM  
Rated RPM: Min 300, Max 3000



### Technical Data

Operating temp: - 20 ...+ 60 degrees C  
- 4 ...+ 140 degrees F

Weight: 43 oz (1.2 kg)

Protection: IP 65 (IP54 available)

Housing: Aluminum

Shaft: Stainless Steel

Bearings: Ball Races 2 x 6001 ZZ

Torque: 0.7 oz/in (5 N-cm)

Humidity: Up to 98% permissible

Max Speed: 3000 RPM max.

Shaft load: Supports its own weight

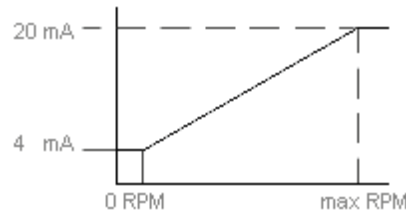
Precision:  
0 rpm = +/- 0.05mA  
1 rpm to max rpm = +/- 0.2 mA

### Connection Options

+ Loop  
- Loop

**Cable**  
Red  
Black

### Output



\*4...20mA span based on 250 ohm load

## Certifications

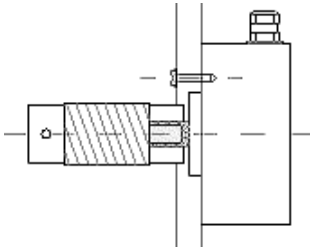
Best suited to work with the following isolators: [MTL5541](#)

IP 66

ATEX [[Certificate](#)]

## Mounting Instructions

Hook up the encoder with the connections as described. Make sure power supply meets specifications. Attach encoder to mounting bracket as shown. Attach shaft using a flexible coupling.



## Dimensions IP66

