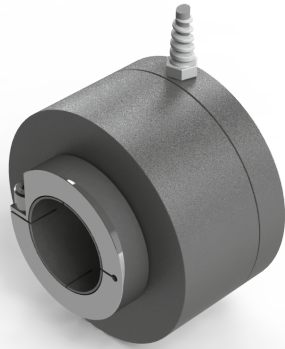


## Series NAMFPX tachometer up to 30 mm - 4...20 mA output



NAMFPX - X X T - 1 G R - X X X X

<u>Shaft Size</u>	<u>Speed (RPM)</u>
14 = 14 mm	4mA = 0 RPM
16 = 16 mm	20mA = Max RPM
20 = 20 mm	Rated RPM:
25 = 25 mm	Min 300, Max 3000
30 = 30 mm	
AA = 1"	



### Technical Data

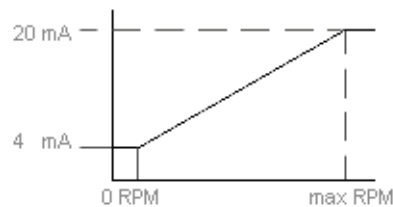
Operating temp:	- 20 ...+ 60 degrees C - 4 ...+ 140 degrees F
Weight:	53 oz (1.5 kg)
Protection:	IP 66M, NEMA 4
Housing:	Aluminum
Shaft:	Stainless Steel
Bearings:	2 x 6807 ZZ
Torque:	0.8 oz/in (6 N-cm)
Shaft load:	Supports its own weight
Humidity:	Up to 98% permissible
Speed:	3000 RPM max.
Precision:	0 rpm = +/- 0.05mA 1 rpm to max rpm = +/- 0.2 mA

### Connection Options

<b>Cable 2 meters</b>	
+ Loop	Red(1) or 1
- Loop	Black (2) or 2

### Output

Diagram is shown clockwise



\*4...20mA span based on 250 ohm load

## Certifications

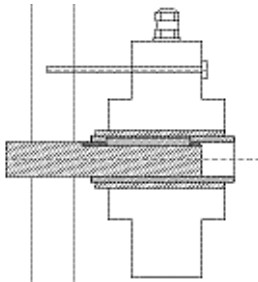
Best suited to work with the following isolators: [MTL5541](#)

IP 66M

ATEX

## Mounting Instructions

Clamp encoder to shaft and use torque arm to prevent rotation. Hook up the encoder with the connection as described. Make sure power supply meets specifications



## Dimensions

