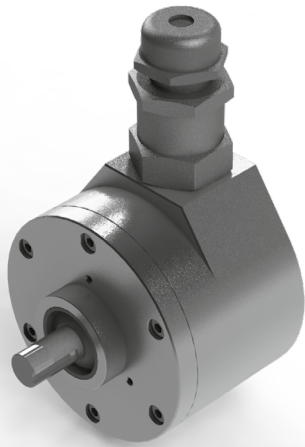


## Series CSMXE absolute 4...20mA heavy duty shaft encoder up to 12mm



|   |   |                             |   |   |   |   |                         |   |   |   |   |   |   |
|---|---|-----------------------------|---|---|---|---|-------------------------|---|---|---|---|---|---|
| M | E | X                           | X | - | X | X | X                       | X | - | 0 | X | X | X |
|   |   | <u>Output</u>               |   |   |   |   | <u>Resolution</u>       |   |   |   |   |   |   |
|   |   | 06 = 2 wire                 |   |   |   |   | 090 = 90 degrees        |   |   |   |   |   |   |
|   |   | 34 = 3 wire                 |   |   |   |   | 180 = 180 degrees       |   |   |   |   |   |   |
|   |   | <u>Shaft Size</u>           |   |   |   |   | 360 = 360 degrees       |   |   |   |   |   |   |
|   |   | K5 = 12 x 20 mm             |   |   |   |   | degrees per ramp (turn) |   |   |   |   |   |   |
|   |   |                             |   |   |   |   | <u>Exit</u>             |   |   |   |   |   |   |
|   |   |                             |   |   |   |   | A = Axial               |   |   |   |   |   |   |
|   |   |                             |   |   |   |   | R = Radial              |   |   |   |   |   |   |
|   |   | <u>Protection</u>           |   |   |   |   | <u>Connection</u>       |   |   |   |   |   |   |
|   |   | E = IP66/67 Stainless Steel |   |   |   |   | 3 = 10 m cable          |   |   |   |   |   |   |
|   |   |                             |   |   |   |   | 5 = 20 m cable          |   |   |   |   |   |   |



Class I, Zone 1; Zone 21; Class II, Div 2

### Technical Data

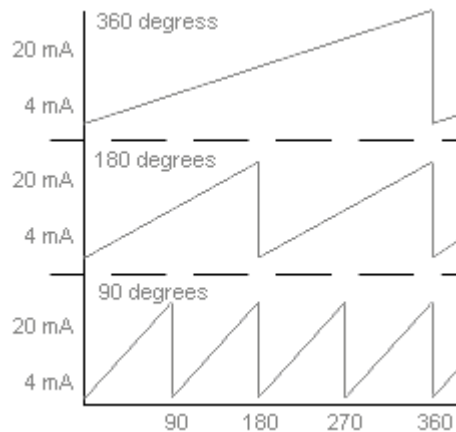
|                      |  |
|----------------------|--|
| Operating temp:      | - 20 ...+ 60 degrees C                     |
|                      | - 4 ...+ 140 degrees F                     |
| Optional:            | -40 degrees                                |
| Current consumption: | 80 mA (max.)                               |
| Power supply:        | 24V  |
| Weight:              | 2.5Kg                                      |
| Housing:             | S. Steel                                   |
| Shaft:               | Stainless Steel                            |
| Bearings:            | 2 x 6001 RSH                               |
| Torque:              | 0.4 oz/in (3 N-cm)                         |
| Humidity:            | Up to 98% permissible                      |
| Speed:               | 3000 RPM max.                              |
| Shaft load:          | Radial / Axial 10 N                        |
| Accuracy:            | 0.5 degrees for 3 wire                     |
| Optional:            | High res 14 bit version with 0.2° accuracy |

### Connection Options

|                       |       |
|-----------------------|-------|
| <b>2 wire version</b> |       |
| + Loop                | Red   |
| - Loop                | Black |
| <b>3 wire version</b> |       |
| PS GND                | Black |
| PS +24 Volts          | Red   |
| Output 4...20 mA      | White |

### Output

Count will increment in CW direction.



\*4...20mA span based on 250 ohm load

## Certifications

**Flameproof**, does not require barrier for use in hazardous areas, and we use a barrier gland for added safety

IP 66/X7

ATEX [\[Certificate\]](#)

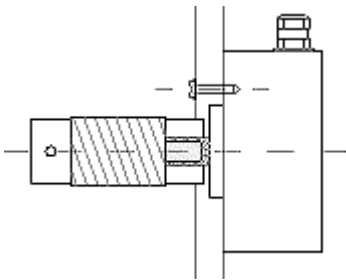
IECEX [\[Certificate\]](#)

CSA [\[Certificate\]](#)

GOST-CU [\[Certificate\]](#)

## Mounting Instructions

To mount encoder on machine: Option 1 is to mount with three screws, option 2 is to use synchroflange mounting brackets. Hook up the encoder with the connections as described. Make sure power supply meets specifications. Attach encoder to mounting bracket as shown. Attach shaft using a flexible coupling.



## Dimensions

