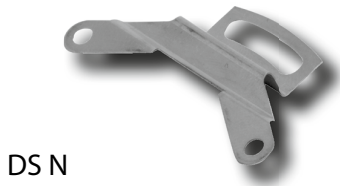
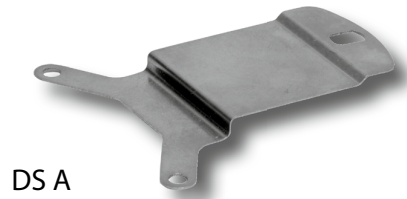


Torque supports

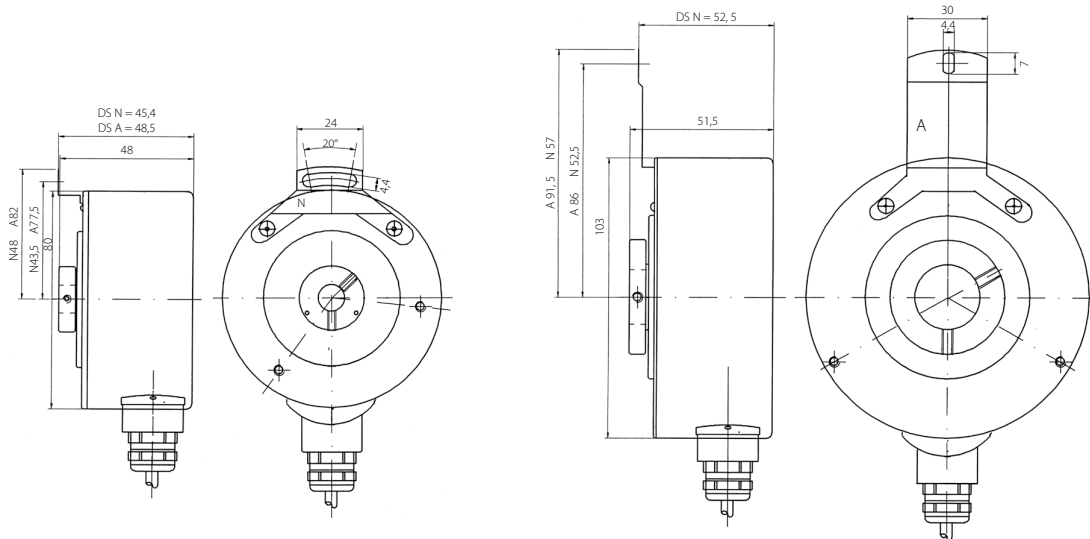


DS N



DS A

Mechanical dimensions



Installation instructions

In order to compensate axial and radial shaft run-out, as well as any angle set, the rotary encoder flange may not be rigidly secured. Fix the flange above a stator coupling (e.g. spring sheet) as torque support.

The following flexible fixing plates are available:

DS A suitable for encoder type HWI 103

Shaft offset max: +/- 2.0 mm axial, +/- 0.15 mm radial

DS N suitable for encoder type HWI 80

Shaft offset max: +/- 0.5 mm axial, +/- 0.3 mm radial