

Series 08 stainless steel 4...20mA tachometer up to 1/2"



0 8 X X - 0 5 X X - X X X X

Shaft Size

10 = 10 mm
12 = 12 mm

Speed (RPM)

4mA = 0 RPM
20mA = Max RPM
Rated RPM
Min 300, Max 3000

Connection

1 = 2 m (6 ft) cable
F = 4 pin plug

Housing Material

S = Stainless Steel



Zone 0

Technical Data

Operating temp: - 20 ...+ 60 degrees C
- 4 ...+ 140 degrees F

Weight: 26 oz (0.75 kg)

Protection: IP 67M

Housing: Stainless Steel

Shaft: Stainless Steel

Bearings: 3 x 6803 ZZ C2

Torque: 0.8 oz/in (6 N-cm)

Shaft load: Supports its own weight

Humidity: Up to 98% permissible

Speed: 3000 RPM max.

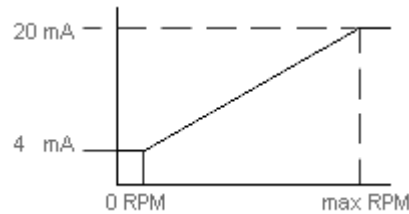
Precision:
0 rpm = +/- 0.05mA
1 rpm to max rpm = +/- 0.2 mA

Connection Options

Cable 2 meters

+ Loop Red
- Loop Black

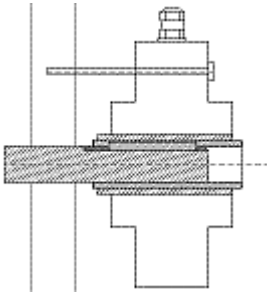
Output



*4...20mA span based on 250 ohm load

Mounting Instructions

Clamp encoder to shaft and use torque arm to prevent rotation. Hook up the encoder with the connection as described. Make sure power supply meets specifications



Dimensions

