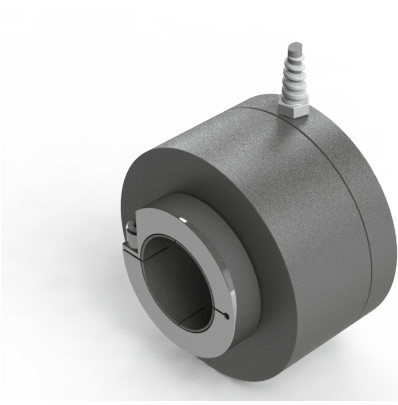


Series NAMFPX tachometer up to 30 mm - 4...20 mA output



NAMFPX - X X T - 1 G R - X X X X

<u>Shaft Size</u>	<u>Speed (RPM)</u>
14 = 14 mm	4mA = 0 RPM
16 = 16 mm	20mA = Max RPM
20 = 20 mm	Rated RPM:
25 = 25 mm	Min 300, Max 3000
30 = 30 mm	
AA = 1"	



Technical Data

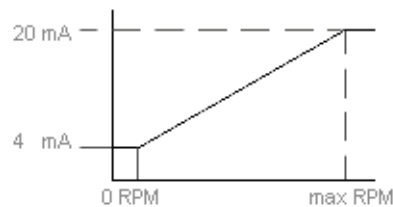
Operating temp:	- 20 ...+ 60 degrees C - 4 ...+ 140 degrees F
Weight:	53 oz (1.5 kg)
Protection:	IP 66M, NEMA 4
Housing:	Aluminum
Shaft:	Stainless Steel
Bearings:	2 x 6807 ZZ
Torque:	0.8 oz/in (6 N-cm)
Shaft load:	Supports its own weight
Humidity:	Up to 98% permissible
Speed:	3000 RPM max.
Precision:	
	0 rpm = +/- 0.05mA
	1 rpm to max rpm = +/- 0.2 mA

Connection Options

Cable 2 meters	
+ Loop	Red(1) or 1
- Loop	Black (2) or 2

Output

Diagram is shown clockwise



*4...20mA span based on 250 ohm load

Certifications

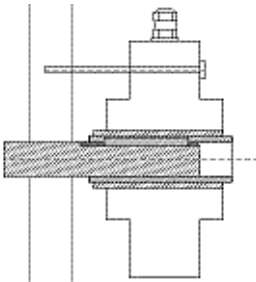
Best suited to work with the following isolators: [MTL5541](#)

IP 66M

ATEX

Mounting Instructions

Clamp encoder to shaft and use torque arm to prevent rotation. Hook up the encoder with the connection as described. Make sure power supply meets specifications



Dimensions

