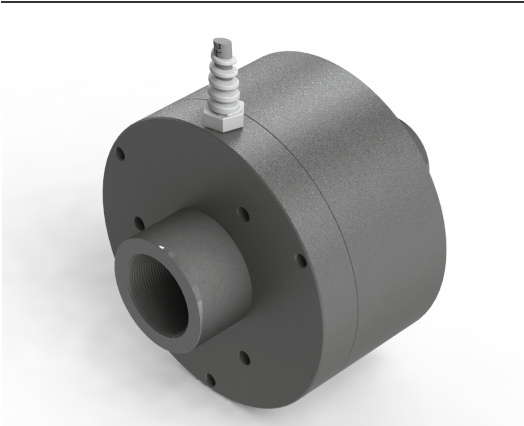


## Series NAMFPX tachometer (special threaded shafts) up to H7 4...20 mA output



NAMFPX - X X T - 1 G R - X X X X

Shaft Size	Speed (RPM)
H1 = 1" UNS	4mA = 0 RPM
H2 = 3/4" BSP	20mA = Max RPM
H3 = 5/8" BSP	Rated RPM
H4 = 1 - 1/4" x 14 tpi (16mm bore)	Min 300, Max 3000
H5 = 5/8" x 18 UNF	
H6 = 1 1/4" x 14 tpi (25mm bore)	
H7 = 3/4" UNC	



### Technical Data

Operating temp:	- 20 ...+ 60 degrees C - 4 ...+ 140 degrees F
Weight:	53 oz (1.5 kg)
Protection:	IP 66M, NEMA 4
Housing:	Aluminum
Shaft:	Stainless Steel
Bearings:	2 x 6807 ZZ
Torque:	0.8 oz/in (6 N-cm)
Shaft load:	Supports its own weight
Humidity:	Up to 98% permissible
Speed:	3000 RPM max.

Precision:  
0 rpm = +/- 0.05mA

1 rpm to max rpm = +/- 0.2 mA

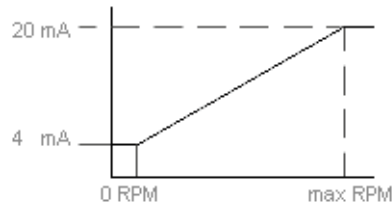
### Connection Options

#### Cable 2 meters

+ Loop	Red (1) or 1
- Loop	Black (2) or 2

#### Output

Diagram is shown clockwise



\*4...20mA span based on 250 ohm load

## Certifications

Best suited to work with the following isolators: [MTL5541](#)

IP 66M

ATEX

## Mounting Instructions

Clamp encoder to shaft and use torque arm to prevent rotation. Hook up the encoder with the connection as described. Make sure power supply meets specifications

## Dimensions

