

Series NAMYQX stainless steel incremental 2.5" square shaft encoder



NAMYQX X X L 8 S R / X X X X

Shaft Size

Resolution - ppr

K4 = 10 x 20 mm

K5 = 12 x 20 mm

K7 = 3/8" x 20 mm

5...24 Volt Extended Line Driver is standard, optional Current Sink Open Collector is available



IECEX



Zone 0, Class 1 Div 1

Technical Data

Operating temp:	- 20 ...+ 60 degrees C - 4 ...+ 140 degrees F
Max frequency:	150 kHz
Weight:	53 oz (1.0 kg)
Protection:	IP 66/X7 M
Housing:	St. Steel
Shaft:	Stainless Steel
Bearings:	2 x 6001
Torque:	0.8 oz/in (6 N-cm)
Shaft load:	Supports its own weight
Humidity:	Up to 98% permissible
Speed:	Resolution dependant
Max. ppr	5000

Connection Options

PS GND	Cable 2 meters
PS 5...24 V	Black
Output A	Red
Output B	White
Output O	Blue
Output A inv	Yellow
Output B inv	Green
Output O inv	Violet
	Brown

Connector

Any type of connector with more than 4 pins and an IP rating of 66 can be used, pin allocations will be determined by end customer. More than one connector is possible as well.

Output for Channels

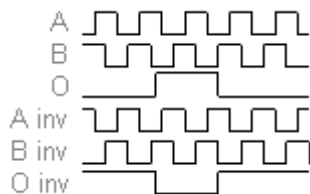


Diagram is shown clockwise

Certifications

To use the encoder in a hazardous area, a safety barrier or galvanic isolator has to be used. Our six channel barrier and isolator work with our encoders. [Isolator Data Sheet](#)

IP66/X7

ATEX [\[Certificate\]](#)

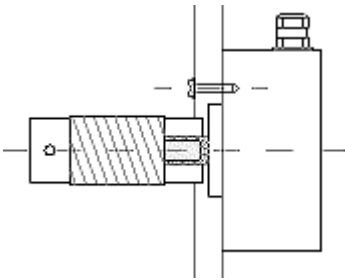
IECEX [\[Certificate\]](#)

CSA [\[Certificate\]](#)

GOST-CU [\[Certificate\]](#)

Mounting Instructions

Clamp encoder to shaft and use torque arm to prevent rotation. Hook up the encoder with the connection as described. Make sure power supply meets specifications



Dimensions

