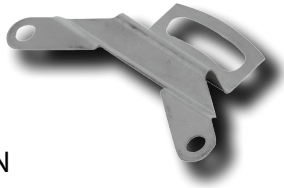
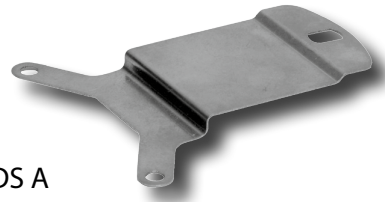


## Torque supports

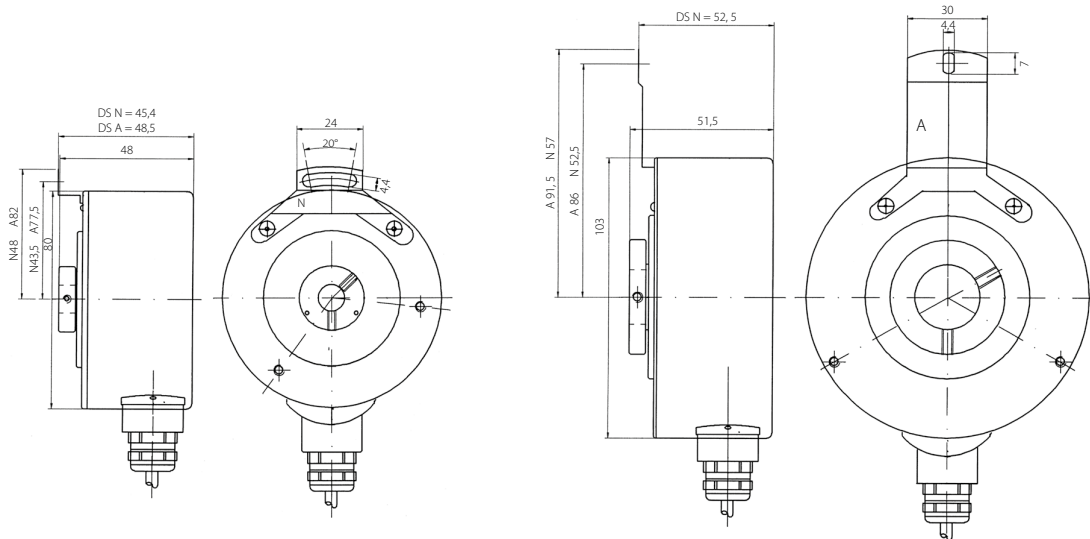


DS N



DS A

## Mechanical dimensions



## Installation instructions

In order to compensate axial and radial shaft run-out, as well as any angle set, the rotary encoder flange may not be rigidly secured. Fix the flange above a stator coupling (e.g. spring sheet) as torque support.






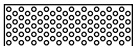






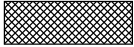

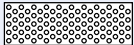


The following flexible fixing plates are available:

DS A suitable for encoder type HWI 103

Shaft offset max: +/- 2.0 mm axial, +/- 0.15 mm radial

DS N suitable for encoder type HWI 80

Shaft offset max: +/- 0.5 mm axial, +/- 0.3 mm radial

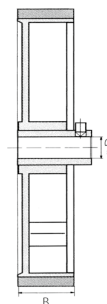
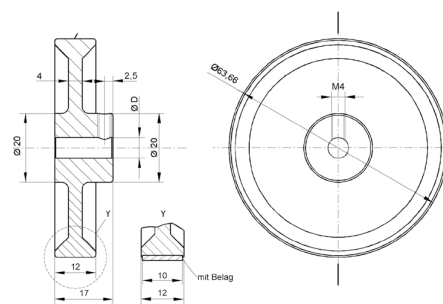
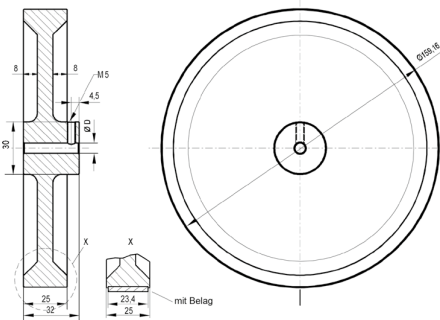
Measuring wheels	Type	Circumference	Material	D	B	Coating	Profile
	M 101	500	Plastic or Aluminium	10 / 12	25	Smooth plastic	
	M 102	500	Plastic or Aluminium	10 / 12	25	Ribbed plastic	
	M 120	500	Plastic or Aluminium	10 / 12	25	Napped rubber	
	M 130	500	Plastic or Aluminium	10 / 12	25	Knurled aluminium	
	M 140	500	Plastic or Aluminium	10 / 12	25	Vulkollan plastic	
	M 108	200	Plastic or Aluminium	6/10	12	Smooth plastic	
	M 110	200	Plastic or Aluminium	6/10	12	Knurled aluminium	
	M 190	200	Plastic or Aluminium	6/10	12	Napped rubber	
	M 109	200	Plastic or Aluminium	6/10	12	Ribbed plastic	


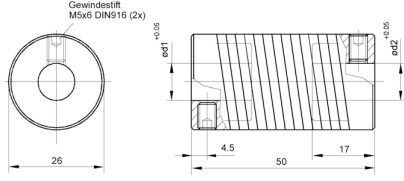

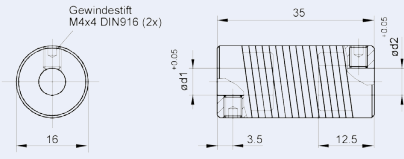

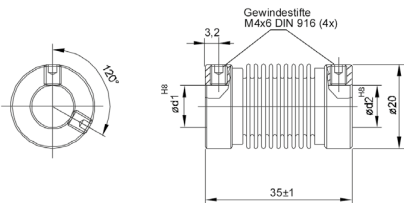

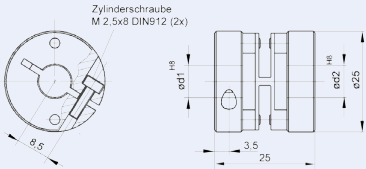
## Mechanical dimensions


Measuring wheel 500 mm circumference

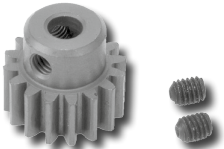
Measuring wheel 200 mm circumference

Tolerance  
0.2 % – 0.5 %



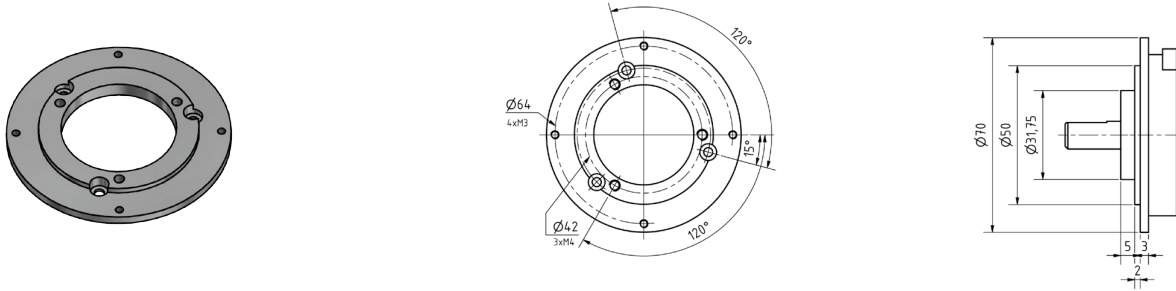
Couplings	Type	A	B	d <sup>1</sup>	d <sup>2</sup>	Mechanical dimensions
	Spring coupling K 401	50	26	6	6	
				6	8	
				6	10	
				8	8	
				8	10	
				10	10	
		10	12			
		12	12			
	Spring coupling K 402	35	16	4	5	
				5	5	
				5	6	
				6	6	
				6	8	
				8	8	
	Bellow coupling K 409	35	20	4	4	
				4	6	
				6	6	
				6	10	
				8	8	
				10	10	
		10	12			
	Spring washer coupling K 410	25	25	6	6	
				6	10	
				8	8	
				10	10	
				10	12	
				12	12	

Rack	Type	Width	Height	Length
	Z 214	5	20	1000

Sprocket	Type	Teeth	Circumference
	R 218	16	50,26

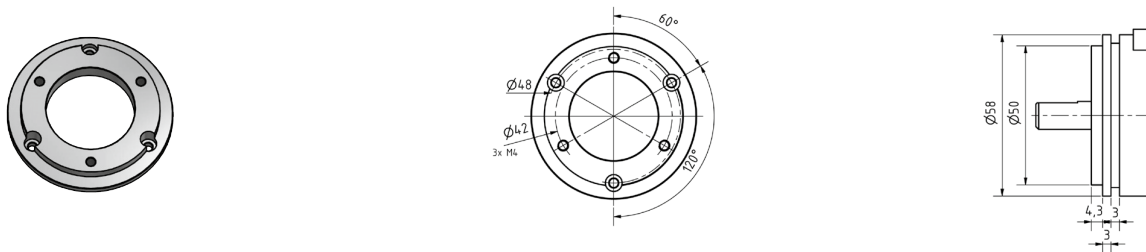
Round flange

F 2 for series AWI 58, AWI 58H, AWA 58, BC 58, PS and PSM



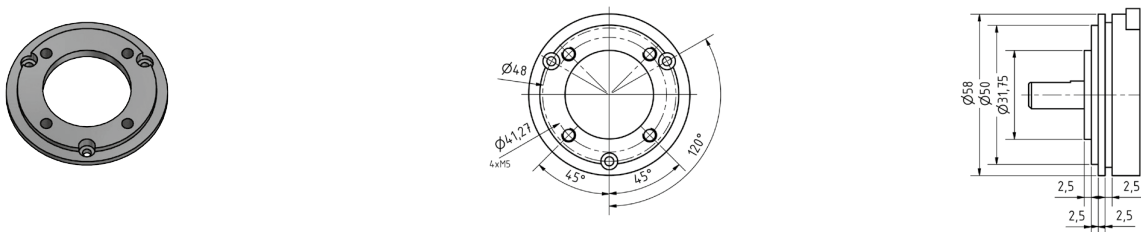
Round flange

F 3 for series AWI 58, AWI 58H, AWA 58, BC 58, PS and PSM



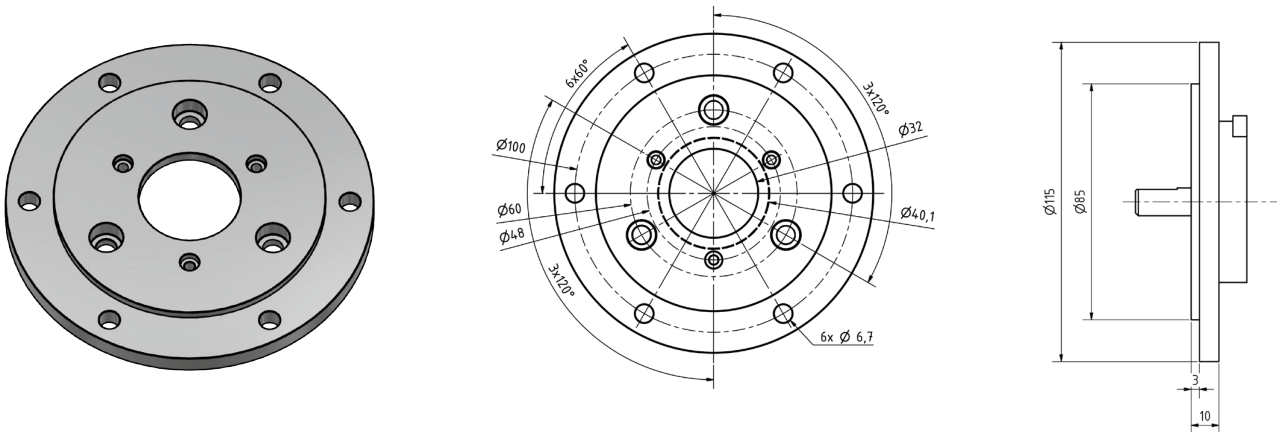
Round flange

F 4 for series AWI 58, AWI 58H, AWA 58, BC 58, PS and PSM



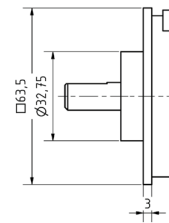
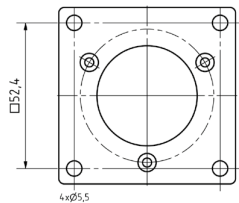
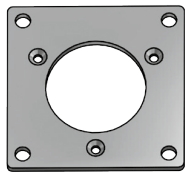
Round flange

Euro flange for series AWI 58, AWI 58H, AWA 58, BC 58, PS and PSM, AWI 90, AWA 90, PA 02, PH 05, 70-140 and 72



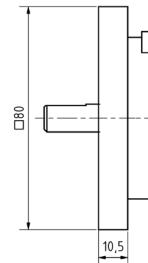
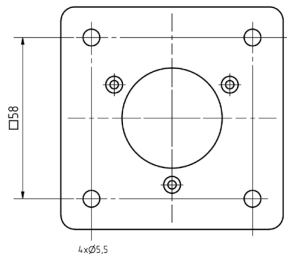
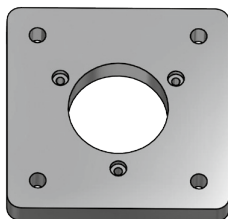
## Square flange

F 5 for series AWI 58, AWI 58H, AWA 58, BC 58, PS and PSM



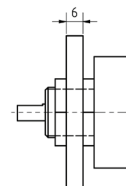
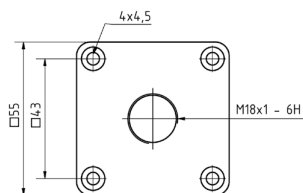
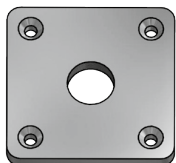
## Square flange

F 6 for series AWI 58, AWI 58H, AWA 58, BC 58, PS and PSM



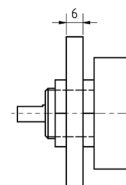
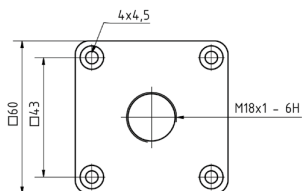
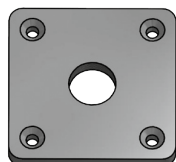
## Square flange

F 7 S for series AWI 40 S



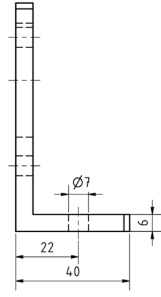
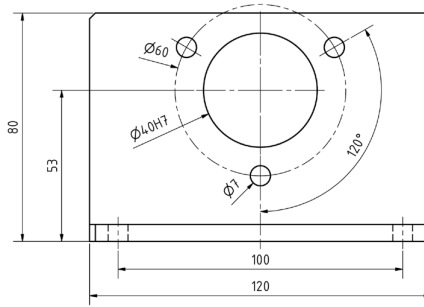
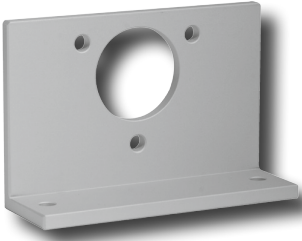
## Square flange

F 7 E for series AWI 40 E



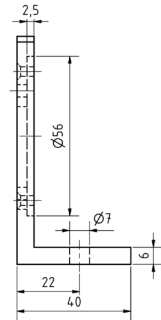
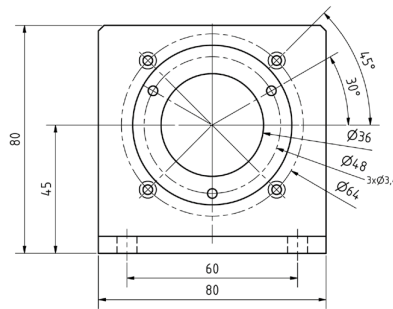
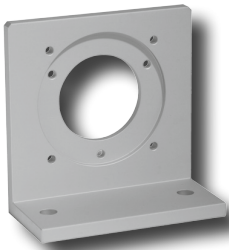
## Angle flange

WF 1 for series AWI 90, AWA 90, PH 05, PA 02, 72, 70-140



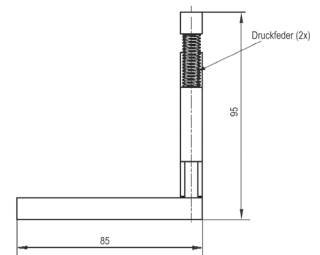
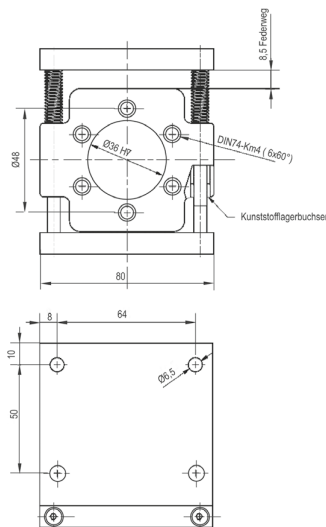
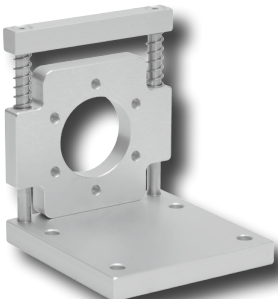
## Angle flange

WF 2 for series AWI 58, AWI 58H, AWA 58, BC 58, PS and PSM



## Angle flange

WF 3 for series AWI 58, AWI 58H, AWA 58, BC 58, PS and PSM





## Mounting bell

For series AWA 58, AWI 58, AWI 58 H, BC 58, PS & PSM

The mounting bell MOGL 5038 provides a very simple and inexpensive installation for all encoders with a synchro flange. The mounting bell made of fibreglass-reinforced plastic in injection moulding technology has a thermally and electrically insulating effect.

The encoder is mounted optionally onto the bell with 3 screws M4 x 10 DIN 912 or 3 mounting eccentrics

### Technical data

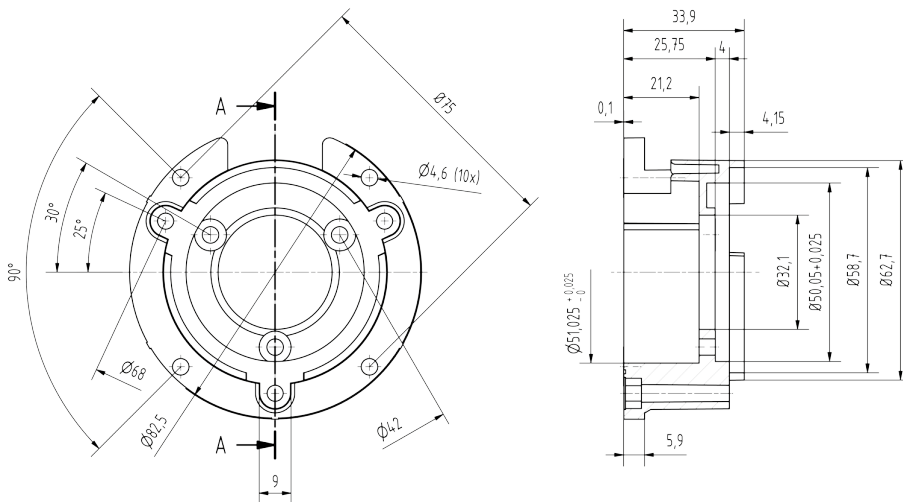
#### Model

Material  
Temperature range  
Weight  
Net distance (encoder drive)  
Net outlet (for coupling)

#### MOGL 5038

Fortron (PPS) 40% fibreglass-reinforced, black  
-40° C ... +270°C  
54 g  
25.8 mm  
Ø 32.1 mm

### Mechanical dimensions



### Mounting kit DMSA 2000 for mounting bell

consisting of:

- 4 x screw M4 x 12 DIN 912
- 3 x mounting eccentric BEMN 1242 49
- 3 x screw M4 x 10 DIN 912
- 3 x cylinder screw M4 x 35 DIN 84 A2
- 7 x disc 4.3 DIN 433
- 3 x hexagon nut M4 DIN 934 A2