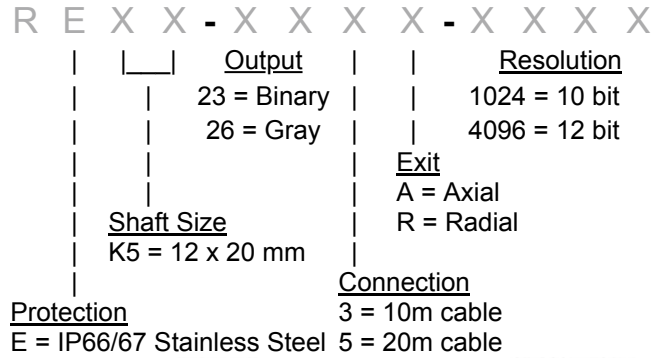
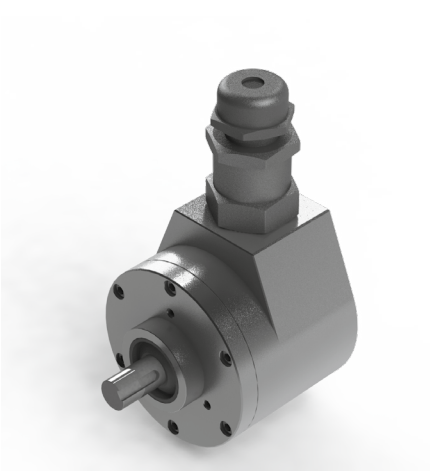


## Series CSRXE stainless steel parallel absolute shaft encoder



**IECEX**



Class I, Zone 1; Zone 21; Class II, Div 2

### Technical Data

Operating temp:	- 20 ...+ 60 degrees C - 4 ...+ 140 degrees F
Power supply:	11 - 24V
Current consumption:	100 mA (max.)
Line driver output max:	50 mA per channel
Weight:	2.5Kg
Protection:	IP 66 / 67
Housing:	S. Steel
Shaft:	S. Steel
Bearings:	2 x 6001 RSH
Torque:	0.4 oz/in (3 N-cm)
Shaft Seal:	Nitrile Double Lip
Humidity:	Up to 98% permissible
Speed:	3000 RPM max.
Shock:	10g (6msec)
Vibration:	5g (500 Hz)
Shaft load:	Radial max 10 lbs

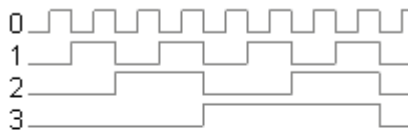
### Connection Options

Bin / Gray	cable with colours
PS GND	Black
PS 12 ... 24 V	Red
2-0	White
2-1	Blue
2-2	Yellow
2-3	Green
2-4	Violet
2-5	Brown
2-6	Pink
2-7	White/Red
2-8	Grey
2-9	White/Green
2-10	White/Yellow
2-11	White/Blue
For cw	White/Black NC
For ccw	White/Black to GND

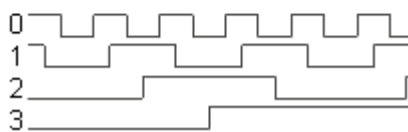
### Output

Count will increment in cw direction

Binary Code Output



Gray Code Output



## Certifications

**Flameproof**, does not require barrier for use in hazardous areas, and we use a barrier gland for added safety

IP 66/X7

ATEX [\[Certificate\]](#)

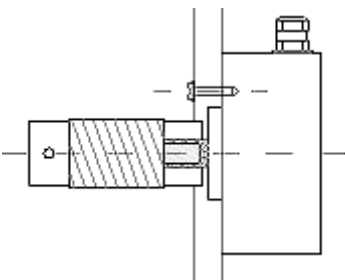
IECEX [\[Certificate\]](#)

CSA [\[Certificate\]](#)

GOST-CU [\[Certificate\]](#)

## Mounting Instructions

To mount encoder on machine: Option 1 is to mount with 3 screws or, option 2 is to mount using synchroflange mounting brackets. Hook up the encoder with the connections as described. Make sure power supply meets specifications. Attach encoder to mounting bracket as shown. Attach shaft using a flexible coupling.



## Dimensions

