

Series H incremental shaft encoder up to 12 mm



H B X X - 1 3 X X - X X X X

Shaft Size
 K2 = 6 x 10 mm
 K4 = 10 x 20 mm
 K5 = 12 x 20 mm

Resolution - ppr
 A = Axial
 R = Radial

Connection
 1 = 2m cable
 2 = 5m cable
 G = 9418 8 pin plug & socket
 H = 9512 12 pin plug & socket

IP Rating
 HA = IP54
 HB = IP65 (standard)

5...24 Volt Extended Line Driver is standard, optional Current Sink Open Collector is available



Zone 0, Class 1 Div 1

Technical Data

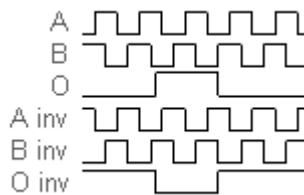
Operating temp:	- 20 ...+ 60 degrees C - 4 ...+ 140 degrees F
On request:	- 40 degrees
Max frequency:	150 kHz
Current consumption:	50 mA (max.)
Power supply:	5 - 24V
Weight:	21 oz (0.6 kg)
Protection:	IP 65 (IP54 available)
Housing:	Aluminum
Shaft:	Stainless Steel
Bearings:	2 x 6001 - (Z) (RS)
Torque:	0.7 oz/in (5 N-cm)
Humidity:	Up to 98% permissible
Speed:	6000 RPM max.
Shock:	10g (6msec)
Vibration:	5g (500 Hz)
Shaft load:	Radial / Axial 10 N
Line driver output max:	50 mA per channel
Max. ppr	5000
Inertia:	30 gm-cm ²

Connection Options

	Cable	12 pin
PS GND	Black	1
PS 5 ... 24 V	Red	2
Output A	White	3
Output B	Blue	4
Output O	Yellow	5
Output A inv	Green	6
Output B inv	Violet	7
Output O inv	Brown	8

Output

Diagram is shown with clockwise shaft rotation viewed from shaft end



Certifications

To use the encoder in a hazardous area, a safety barrier or galvanic isolator has to be used. Our six channel barrier and isolator work with our encoders.

IP 54 or 65

ATEX

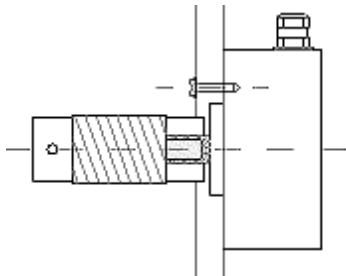
IECEX

CSA

GOST-CU

Mounting Instructions

Hook up the encoder with the connections as described. Make sure power supply meets specifications. Attach encoder to mounting bracket as shown. Attach shaft using a flexible coupling.



Dimensions

