

## Series 20

- ▶ Incremental rotary-encoder with a solid shaft diameter of 6mm
- ▶ Square housing, small design and normal degree of protection
- ▶ Maximum 1.024 pulses / revolution
- ▶ For simple industrial requirements
- ▶ Accessories from page 78

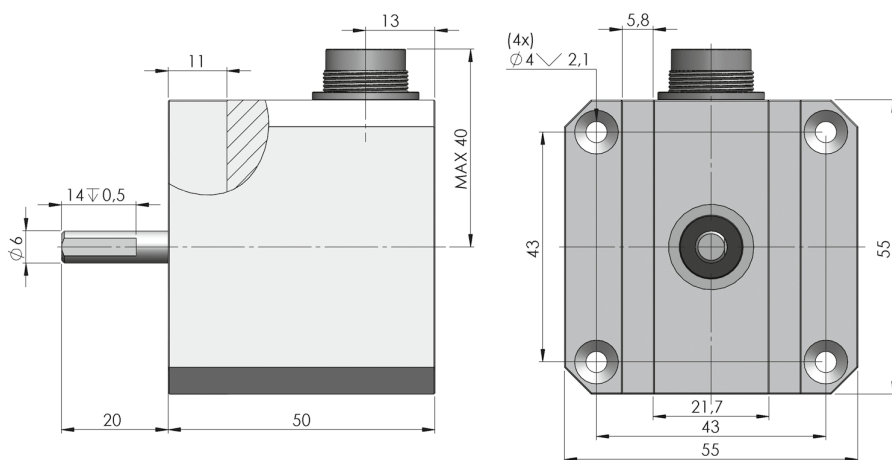
### Electrical specifications

max. pulse frequency:	25 kHz
Perm. temperature range:	-30°... +70° C
Power supply:	10 V ... 30 V DC
Max. current consumption:	80 mA (without load)
Max. output load:	30 mA (per channel)
Residual ripple:	max. $\pm 5\% U_B$
Power supply:	5 V DC $\pm 5\%$
Max. current consumption:	80 mA

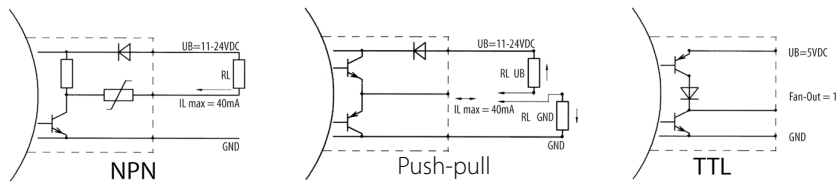
### Mechanical specifications

Housing/Flange:	Zinc die-casting - cadmium-plated
Shaft:	stainless steel
Bearing:	Deep groove ball bearing
Weight:	approx 0,5 kg
Protection type:	IP 41 according to DIN 40050
Max. speed:	3.000 U/min
Moment of inertia:	10 gcm <sup>2</sup>
Torque:	approx 0,4 Ncm
Max. shaft load:	axial 5 N radial 3 N

### Mechanical dimensions



## Output circuits

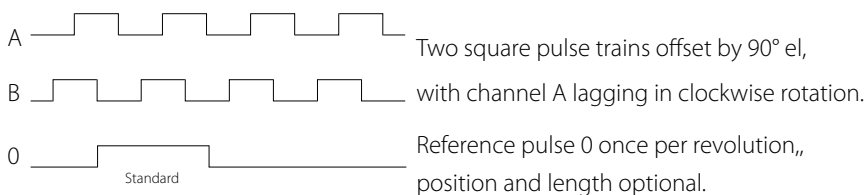


Order ref.: 0

1

3

## Signal outputs



All channels can also be executed inversely.

## Pin configuration

	- Volts	+ Volts	A	B	0
Connection type 5-core cable	black	blue	brown	beige	yellow
Connection type 9414/08 connector	Pin 1	Pin 2	Pin 3	Pin 4	Pin 5
Connection type 9412/05 connector	Pin 1	Pin 2	Pin 3	Pin 4	-

## Order reference

